



Memorandum of Understanding

- Cross-tied agreements
 - MEPOD Zoning
 - Site Plan Approval
 - TIF Article
 - Design Guidelines
- Contract between PRS & Town, pre-condition to Occupancy
- Conditioned upon funding for I-Cubed State Initiative

Memorandum of Understanding

- Access
- Groundwater
- Wastewater
- Storm water
- Town Services

MOU-Access

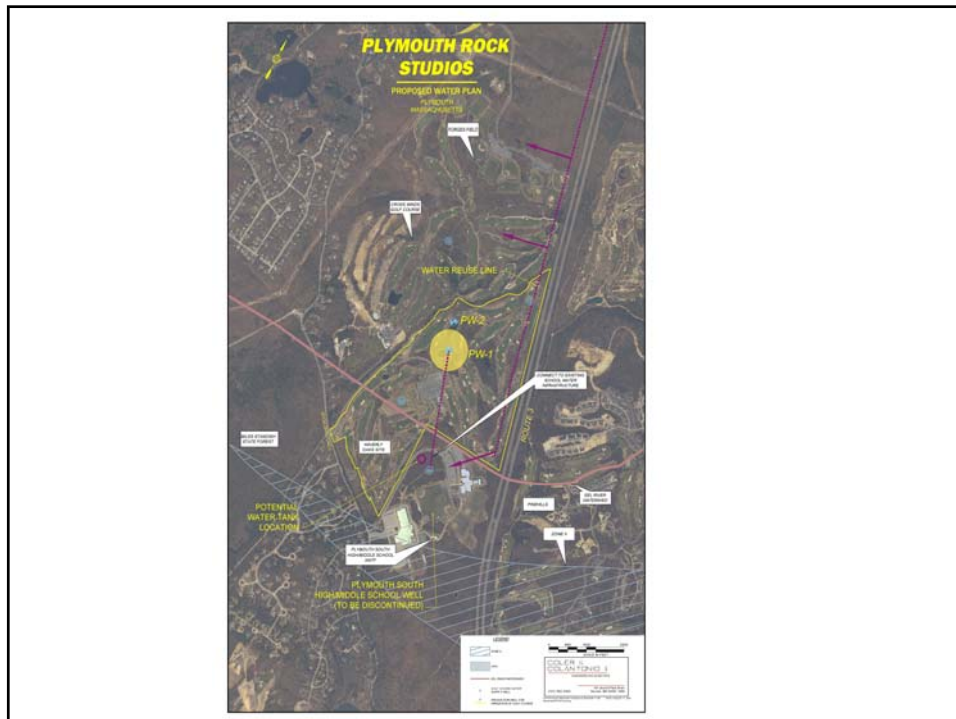


- New Road from Clark Road to Schools & Site
- Mitigation improvements on Long Pond road, Clark road, Exit 3
- Construction Access mitigation & control
- Limited access along Long Pond road, residential only
- PRS to cover costs and peer review
- Shuttle service to PRS & downtown

MOU-Water Supply



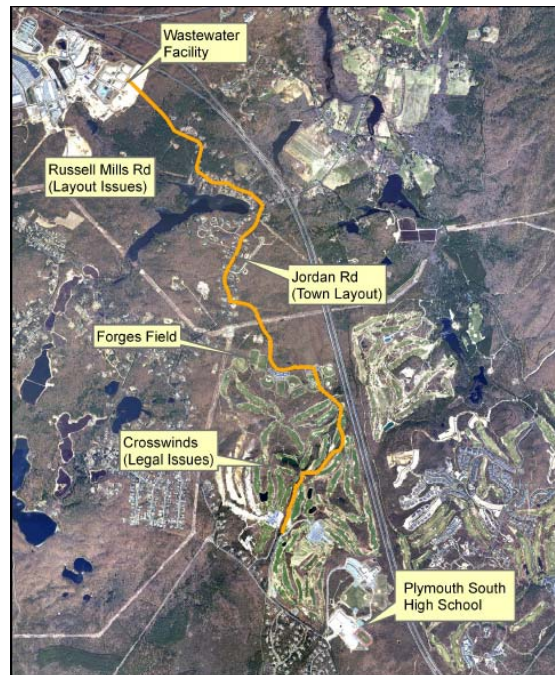
- PRS to design, construct & permit existing well conversion to domestic use
- Reduced withdrawal from current 300,000 gpd
- PRS to coordinate with adjacent schools to construct storage tank and tie their needs into those of PRS
- Conveyance of improvements to Town of Plymouth



MOU-Wastewater



- PRS to construct pressurized wastewater main from school property to Town Sewer Plant at Camelot Drive through Town land north of PRS
- Flow capacity will accommodate schools and PRS
- Town will not assess any betterment fees
- Town will process permits for re-use water line back to PRS & school



MOU-Storm water



- Storm water system will be designed to percolate on site
- Low Impact Development criteria will be utilized
- Pre-treatment of storm water using bio filters and infiltration systems

MOU-Town Services



- Fire
- Police
- Inspectional Services
- Schools